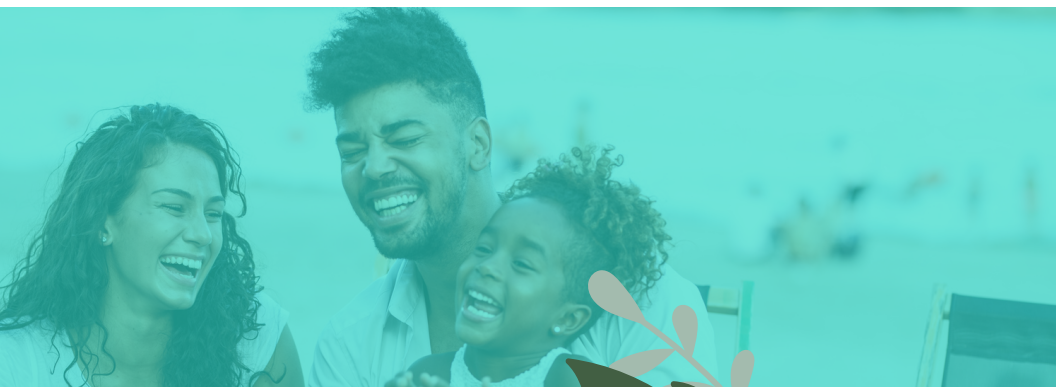


LifeClinic

Community Resources

Spring 2021 Update



IN THIS UPDATE

Letter from Lori

We Love Our Volunteers

Free Ultrasounds

Kroger Community Rewards

Tree of Life Fundraiser

Give Local Midland

Shop for Life

Trauma-Informed Design

Meet "Jenny"



May the God of Hope fill
you with joy and peace
as you trust him, so that
you may overflow with
hope by the power of
the Holy Spirit.

Romans 15:13

Dear LifeClinic Family,

I always look forward to this time of year. Glimpses of spring fill my heart and mind with hope. The anticipation of blooming flowers, warmer temperatures, walks outside and open-toed shoes make me a little giddy. Hope allows me to have short-term memories of the cold, dark nights and COVID-weary days we experienced this year and allow my thoughts to wander to the sunny, joy-filled days ahead.

We are also full of hope and anticipation at LifeClinic. All three, (YES, now THREE), of our centers are close to operating at our “new normal”. (Similar to pre-COVID with a few extra precautions.)

It has been a long year, and we are tired from the work involved with adding another center and making changes that we never seemed to have time to do previously. However, there is an underlying sense that right around the corner better days are ahead and an anticipation of what God will do next.

We pray that your days are also filled with hope and anticipation that God has something amazing planned for you too. We are thankful for you, our LifeClinic family, for your continued prayers, encouragement and financial support. We appreciate you from the bottom of our hearts and look forward to the days when we will be able to see and visit with you in person. Please enjoy our newsletter knowing that God has used your generosity to make these things possible!

God Bless You!
Lori Drake
Executive Director



We Love Our Volunteers!

April is National Volunteer Month and we don't want to miss this chance to publicly thank our wonderful volunteers who faithfully give their time, gifts, and wisdom for the benefit of our clients.

From wrapping diapers, sorting through clothing, meeting with parents, trimming hedges, and so much more, LifeClinic thrives due to the kindness of those working behind the scenes. So to each person who has given so generously...THANK YOU from the bottom of our hearts!

As always, we love to add new smiling faces to our rotation of helpers. If you are interested in donating your gifts and talents for a few hours or possibly even a full day a week, we would love to hear from you!

Please call the center closest to you to learn more about volunteer positions available including Client Advocate, Warehouse, or Blessing Boutique Support positions.



**7-24 weeks pregnant?
Call to schedule your
free ultrasound
appointment today!**

2360 Midland Road
Bay City
989-922-5433



Kroger Community Rewards Program

This is a new fundraiser for LifeClinic. It's simple and fast and doesn't cost anything. Here's what you do:

- Go to www.kroger.com
- Link your rewards card or your alternative ID# to LifeClinic Community Resources
- Hit enroll

It's that easy! Now you shop like normal and Kroger will give LifeClinic a portion of your purchase. Please take the time to enroll. Every penny helps us to eliminate barriers, restore hope and empower choices for life. Thank you for all you do for LifeClinic.

Barb Lepppek
Fundraiser Coordinator

We Need Your Help!

Thank you to everyone that purchased leaves for our Tree of Life Fundraiser. We did not initially sell as many leaves as we were hoping and therefore will be extending the fundraiser as well as adding a tree for our new Bay City location. Watch your mailboxes for more information coming soon!



Give Local Midland is a fundraiser towards an endowment fund for the longevity of area nonprofits on May 4, 2021. You can help LifeClinic by donating or fundraising on our behalf.

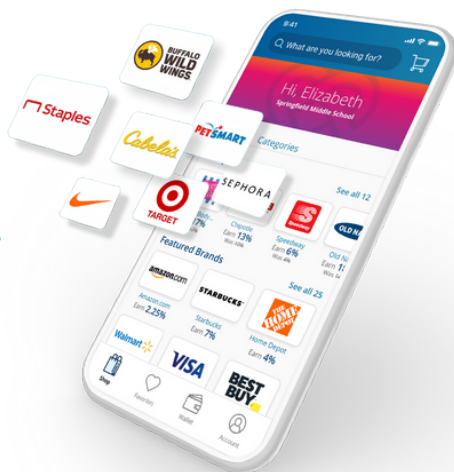
Visit our profile to use the social sharing options:
<http://bit.ly/LifeClinicProfile>

**GIVE LOCAL
MIDLAND**

Shop for Life!

LifeClinic has another opportunity for you to support life—right from your phone! Buy gift cards from 750+ brands and LifeClinic will receive a portion of your purchases.

- **Join the program**
 - First, download the RaiseRight mobile app from the App Store using your smartphone or tablet.
 - Then, enter the enrollment code to join: 72A655F38L843
- **Buy gift cards and earn money for LifeClinic**
 - The brand gives back to LifeClinic the moment you buy a gift card—at no extra cost to you.
- **Get and use your gift cards**
 - eGift cards are delivered to the app within minutes—view them in your Wallet.
 - Physical gift cards are mailed to LifeClinic. Barb Leppek will contact you when they are available for pick up. Many are reloadable so you can keep earning with the ones you have.
 - Use both types in-store and online.



RaiseRight™

by ShopWithScrip



Have questions?

Call Barb at 989-922-5433 or call the ShopWithScrip Customer Support team at 1-800-727-4715 Option 3.

Thank You For Supporting LifeClinic!

What is Trauma-Informed Design?

When we have visitors tour one of our centers, we often hear “It’s so peaceful,” or “It’s very calming.”

We are always affirmed when we hear this, not because of our desire to keep up with current design trends, but rather because every element has been intentionally selected or placed based on Trauma-Informed Design.

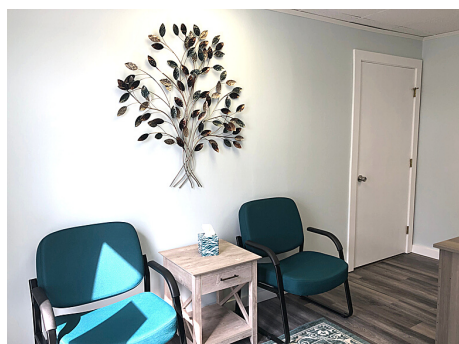
Trauma-Informed Design has three principals:

- Realizing how the physical environment affects an individual’s sense of identity, worth, dignity and empowerment.
- Recognizing that the physical environment has an impact on attitude, mood, and behavior, and that there is a strong link between our physiological state, our emotional state, and the physical environment.
- Responding by designing and maintaining supportive and healing environments for trauma-experienced clients to resist re-traumatization.

When touring our centers or looking at the remodeling pictures, you will easily observe some of these key elements.

The spaces are aesthetically pleasing, visually simple, and free of clutter. The blue and teal palettes have a peaceful effect. The lighter colors make the rooms feel spacious and thus safe and calming. Artwork and décor has been selected to alleviate stress, improve mood, and create a sense of comfort. Landscapes and other natural items were used because they convey positive feelings and allow a connection to nature. Furniture has been placed so clients feel safe and comfortable while remaining in control.

As LifeClinic continues to implement Trauma-Informed Care into our services, we will ensure our environment is handled with the same consideration as the rest of our programming. Every detail communicates to our clients that they are worthy of love and respect and that we desire God’s best for their lives and their families.





Many hands went into the design and construction of the Medical Clinic and Blessing Boutique at our Bay City location. We especially want to thank...

the Hopevale Can Do Crew for their work on the projects, Closets By Design for the beautiful custom shelving in the Blessing Boutique, and Christian Celebration Center and Hopevale for the funds to make it possible.

Thank you!



4818 N. Saginaw Road
Midland, MI 48640

